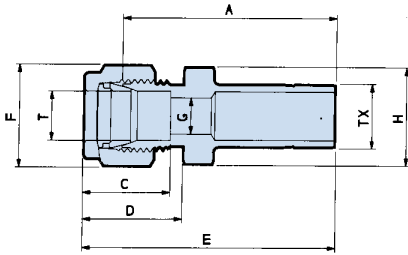


1

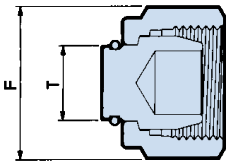
Ringlok® double ferrule OD compression fittings

Reducing adaptor metric



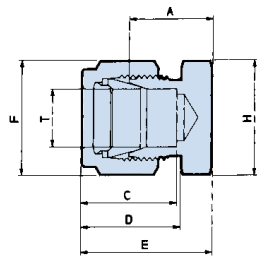
T tube OD	Tx tube dia	part number	A	C	D	E	F hex	H hex	G min
3mm	4mm	RA-M3-M4-SS	27.6mm	13.4mm	15.7mm	34.6mm	7/16"	7/16"	2.3mm
3mm	6mm	RA-M3-M6-SS	30.2mm	13.4mm	15.7mm	37.2mm	7/16"	7/16"	2.3mm
4mm	3mm	RA-M4-M3-SS	27.7mm	14.2mm	16.5mm	34.7mm	7/16"	7/16"	1.8mm
4mm	6mm	RA-M4-M6-SS	31.0mm	14.2mm	16.5mm	38.0mm	1/2"	7/16"	2.7mm
6mm	3mm	RA-M6-M3-SS	29.3mm	16.0mm	18.2mm	37.2mm	9/16"	9/16"	1.8mm
6mm	4mm	RA-M6-M4-SS	30.2mm	16.0mm	18.2mm	28.1mm	9/16"	9/16"	2.3mm
6mm	8mm	RA-M6-M8-SS	33.2mm	16.0mm	18.2mm	41.1mm	9/16"	9/16"	4.8mm
6mm	10mm	RA-M6-M10-SS	34.0mm	16.0mm	18.2mm	41.9mm	9/16"	9/16"	4.8mm
8mm	10mm	RA-M8-M10-SS	35.0mm	16.7mm	19.0mm	42.9mm	11/16"	9/16"	5.3mm
8mm	12mm	RA-M8-M12-SS	40.3mm	16.7mm	19.0mm	48.2mm	11/16"	9/16"	6.3mm
10mm	6mm	RA-M10-M6-SS	35.0mm	17.5mm	19.8mm	42.9mm	3/4"	11/16"	4.0mm
10mm	12mm	RA-M10-M12-SS	42.1mm	17.5mm	19.8mm	50.0mm	3/4"	11/16"	7.8mm
10mm	16mm	RA-M10-M16-SS	42.1mm	17.5mm	19.8mm	51.5mm	3/4"	11/16"	7.8mm
12mm	10mm	RA-M12-M10-SS	37.3mm	23.1mm	22.3mm	47.7mm	7/8"	7/8"	7.1mm
12mm	16mm	RA-M12-M16-SS	44.4mm	23.1mm	22.3mm	54.8mm	7/8"	7/8"	9.6mm
12mm	20mm	RA-M12-M20-SS	44.4mm	23.1mm	22.3mm	54.8mm	7/8"	7/8"	9.6mm
16mm	12mm	RA-M16-M12-SS	43.6mm	24.6mm	22.3mm	54.0mm	1"	15/16"	8.3mm
16mm	20mm	RA-M16-M20-SS	45.2mm	24.6mm	22.3mm	55.6mm	1"	15/16"	12.7mm
20mm	12mm	RA-M20-M12-SS	45.2mm	24.6mm	22.3mm	55.6mm	1 5/16"	1 1/8"	8.3mm
20mm	25mm	RA-M20-M25-SS	53.5mm	24.6mm	22.3mm	63.9mm	1 5/16"	1 1/8"	16.7mm
25mm	20mm	RA-M25-M20-SS	51.5mm	31.2mm	26.6mm	63.9mm	1 1/2"	1 1/2"	15.4mm

Blanking plug



T tube OD	part number	F hex	T tube OD	part number	F hex
1/16"	BP-01-SS	5/16"	3mm	BP-M3-SS	7/16"
1/8"	BP-1-SS	7/16"	4mm	BP-M4-SS	1/2"
3/16"	BP-03-SS	1/2"	6mm	BP-M6-SS	9/16"
1/4"	BP-2-SS	9/16"	8mm	BP-M8-SS	11/16"
3/8"	BP-3-SS	11/16"	10mm	BP-M10-SS	3/4"
1/2"	BP-4-SS	7/8"	12mm	BP-M12-SS	7/8"
5/8"	BP-5-SS	1"	16mm	BP-M16-SS	1"
3/4"	BP-6-SS	1 1/8"	20mm	BP-M20-SS	1 5/16"
1"	BP-8-SS	1 1/2"	25mm	BP-M25-SS	1 1/2"

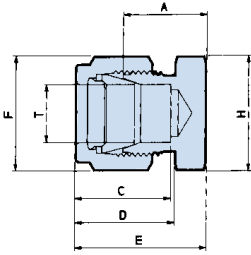
Blanking end



T tube OD	part number	A	C	D	E	F hex	H hex
1/16"	BE-01-SS	0.5"	0.35"	0.47"	0.66"	5/16"	5/16"
1/8"	BE-1-SS	0.53"	0.52"	0.62"	0.81"	7/16"	7/16"
3/16"	BE-03-SS	0.56"	0.55"	0.65"	0.84"	1/2"	7/16"
1/4"	BE-2-SS	0.63"	0.63"	0.72"	0.94"	9/16"	9/16"
3/8"	BE-3-SS	0.72"	0.69"	0.78"	1.03"	11/16"	11/16"
1/2"	BE-4-SS	0.75"	0.91"	0.88"	1.16"	7/8"	7/8"
5/8"	BE-5-SS	0.87"	0.97"	0.88"	1.28"	1"	15/16"
3/4"	BE-6-SS	0.91"	0.97"	0.88"	1.32"	1 1/8"	1 1/8"
1"	BE-8-SS	1.17"	1.23"	1.05"	1.66"	1 1/2"	1 1/2"

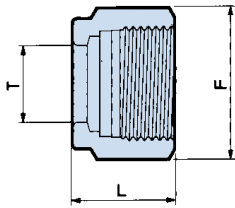
Ringlok® double ferrule OD compression fittings

Blanking end metric



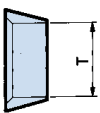
T tube OD	part number	A	C	D	E	F hex	H hex
3"	BE-M3-SS	13.4"	13.4"	15.7"	20.4"	7/16"	7/16"
4"	BE-M4-SS	14.3"	14.2"	16.5"	21.3"	1/2"	7/16"
6"	BE-M6-SS	15.9"	16"	18.2"	23.8"	9/16"	9/16"
8"	BE-M8-SS	17.5"	16.7"	19"	25.4"	11/16"	9/16"
10"	BE-M10-SS	18.2"	17.5"	19.8"	26.1"	3/4"	11/16"
12"	BE-M12-SS	18.7"	23.1"	22.3"	29.1"	7/8"	7/8"
16"	BE-M16-SS	22"	24.6"	22.3"	32.4"	1"	15/16"
20"	BE-M20-SS	23.2"	24.6"	22.3"	33.6"	1 5/16"	1 1/8"
25"	BE-M25-SS	29.7"	31.2"	26.6"	42.1"	1 1/2"	1 1/2"

Compression nut



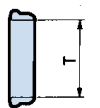
T tube OD	part number	L	F hex	T tube OD	part number	L	F hex
1/16"	CN-01-SS	0.31"	5/16"	3mm	CN-M3-SS	12mm	7/16"
1/8"	CN-1-SS	0.47"	7/16"	4mm	CN-M4-SS	12mm	1/2"
3/16"	CN-03-SS	0.47"	1/2"	6mm	CN-M6-SS	12.7mm	9/16"
1/4"	CN-2-SS	0.5"	9/16"	8mm	CN-M8-SS	13.4mm	11/16"
3/8"	CN-3-SS	0.56"	11/16"	10mm	CN-M10-SS	14.2mm	3/4"
1/2"	CN-4-SS	0.69"	7/8"	12mm	CN-M12-SS	17.5mm	7/8"
5/8"	CN-5-SS	0.69"	1"	16mm	CN-M16-SS	17.5mm	1"
3/4"	CN-6-SS	0.69"	1 1/8"	20mm	CN-M20-SS	17.5mm	1 5/16"
1"	CN-8-SS	0.81"	1 1/2"	25mm	CN-M25-SS	20.5mm	1 1/2"

Front sealing



T tube OD	part number	T tube OD	part number
1/16"	FR-01-SS	3"	FR-M3-SS
1/8"	FR-1-SS	4"	FR-M4-SS
3/16"	FR-03-SS	6"	FR-M6-SS
1/4"	FR-2-SS	8"	FR-M8-SS
3/8"	FR-3-SS	10"	FR-M10-SS
1/2"	FR-4-SS	12"	FR-M12-SS
5/8"	FR-5-SS	16"	FR-M16-SS
3/4"	FR-6-SS	20"	FR-M20-SS
1"	FR-8-SS	25"	FR-M25-SS

Back sealing



T tube OD	part number	T Tube OD	part number
1/16"	BR-01-SS	3"	BR-M3-SS
1/8"	BR-1-SS	4"	BR-M4-SS
3/16"	BR-03-SS	6"	BR-M6-SS
1/4"	BR-2-SS	8"	BR-M8-SS
3/8"	BR-3-SS	10"	BR-M10-SS
1/2"	BR-4-SS	12"	BR-M12-SS
5/8"	BR-5-SS	16"	BR-M16-SS
3/4"	BR-6-SS	20"	BR-M20-SS
1"	BR-8-SS	25"	BR-M25-SS