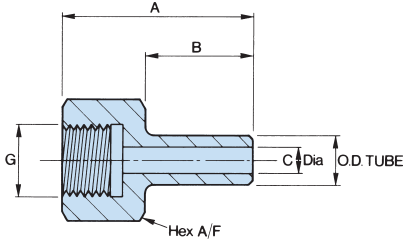


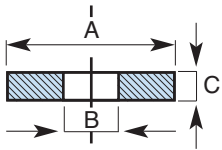
DUOLOC SINGLE FERRULE OD COMPRESSION FITTINGS

BSP parallel female standpipe adaptor



OD	thread size G	part number	A	B	C	hex A/F
1/4"	1/4" BSP	2/2P FSA	1.893"	1.093"	0.100"	0.750"
1/4"	3/8" BSP	2/3P FSA	1.905"	1.093"	0.100"	0.875"
1/4"	1/2" BSP	2/4P FSA	2.000"	1.093"	0.100"	1.125"
3/8"	1/4" BSP	3/2P FSA	1.893"	1.093"	0.235"	0.750"
3/8"	3/8" BSP	3/3P FSA	1.905"	1.093"	0.235"	0.875"
3/8"	1/2" BSP	3/4P FSA	2.000"	1.093"	0.235"	1.125"
1/2"	1/4" BSP	4/2P FSA	1.893"	1.093"	0.312"	0.750"
1/2"	3/8" BSP	4/3P FSA	1.905"	1.093"	0.312"	0.875"
1/2"	1/2" BSP	4/4P FSA	2.000"	1.093"	0.312"	1.125"
3/4"	1/2" BSP	6/4P FSA	2.135"	1.250"	0.437"	1.125"
6mm	1/4" BSP	6M/2P FSA	42mm	26mm	2.5mm	19mm
8mm	1/4" BSP	8M/2P FSA	42mm	26mm	4mm	19mm
10mm	3/8" BSP	10M/3P FSA	45mm	26mm	6mm	22mm
10mm	1/2" BSP	10M/4P FSA	48mm	26mm	6mm	28.5mm
12mm	3/8" BSP	12M/3P FSA	45mm	26mm	8mm	22mm
12mm	1/2" BSP	12M/4P FSA	48mm	26mm	8mm	28.5mm
15mm	1/2" BSP	15M/4P FSA	52mm	26mm	8mm	28.5mm
16mm	1/2" BSP	16M/4P FSA	52mm	30mm	8mm	28.5mm
18mm	1/2" BSP	18M/4P FSA	52mm	30mm	8mm	28.5mm

BSP parallel gauge washer PTFE



thread size G	part number	A	B	C
1/8"	GW1	0.339"	0.157"	0.102"
1/4"	GW2	0.453"	0.165"	0.102"
3/8"	GW3	0.583"	0.236"	0.102"
1/2"	GW4	0.728"	0.236"	0.126"
3/4"	GW6	0.945"	0.500"	0.126"
1"	GW8	1.200"	0.669"	0.126"