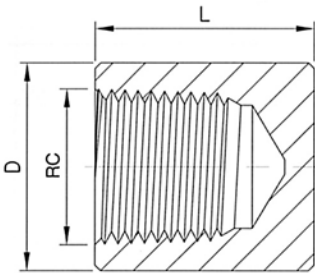


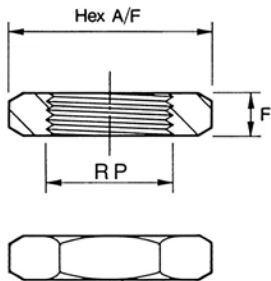
150LB SCREWED PIPE FITTINGS 316 STAINLESS STEEL

Round End Cap



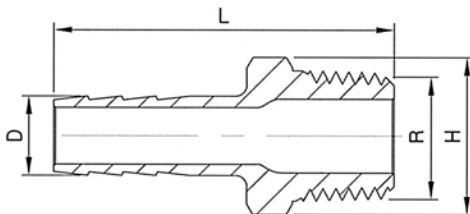
Thread Size BSPT	Part Number	Dim L (mm)	Dim D (mm)	Dim (mm)
RC				
1/8"	EC1-150	17	19	
1/4"	EC2-150	17	21	
3/8"	EC3-150	21	26	
1/2"	EC4-150	23	31	
3/4"	EC6-150	27	37	
1"	EC8-150	33	45	
1 1/4"	EC10-150	41	55	
1 1/2"	EC12-150	41	62	
2"	EC16-150	45	75	

Hexagon Back Nut



Thread Size BSPP	Part Number	Dim F (mm)	Dim A/F (mm)	Dim (mm)
RP				
1/8"	HBN1-150	6	19	
1/4"	HBN2-150	6	22	
3/8"	HBN3-150	7	27	
1/2"	HBN4-150	8	32	
3/4"	HBN6-150	9	37	
1"	HBN8-150	10	46	
1 1/4"	HBN10-150	11	55	
1 1/2"	HBN12-150	12	62	
2"	HBN16-150	13	76	

Hose Connector (Nipple)



HOSE x BSPT x R	Part Number	Dim L (mm)	Dim H (mm)	Dim D (mm)
1/4" x 1/8"	MH2/1T-150	40	12	7
1/4" x 1/4"	MH2/2T-150	40	15	9
3/8" x 1/4"	MH3/2T-150	40	15	11
1/2" x 1/4"	MH4/2T-150	40	15	11
3/8" x 3/8"	MH3/3T-150	45	19	11
1/2" x 3/8"	MH4/3T-150	50	19	13
1/2" x 1/2"	MH4/4T-150	65	23	13
3/4" x 1/2"	MH6/4T-150	60	23	15
3/4" x 3/4"	MH6/6T-150	63	29	21
1" x 1"	MH8/8T-150	70	38	27
1 1/4" x 1 1/4"	MH10/10T-150	81	46	33
1 1/2" x 1 1/2"	MH12/12T-150	95	52	46
2" x 2"	MH16/16T-150	100	63	57